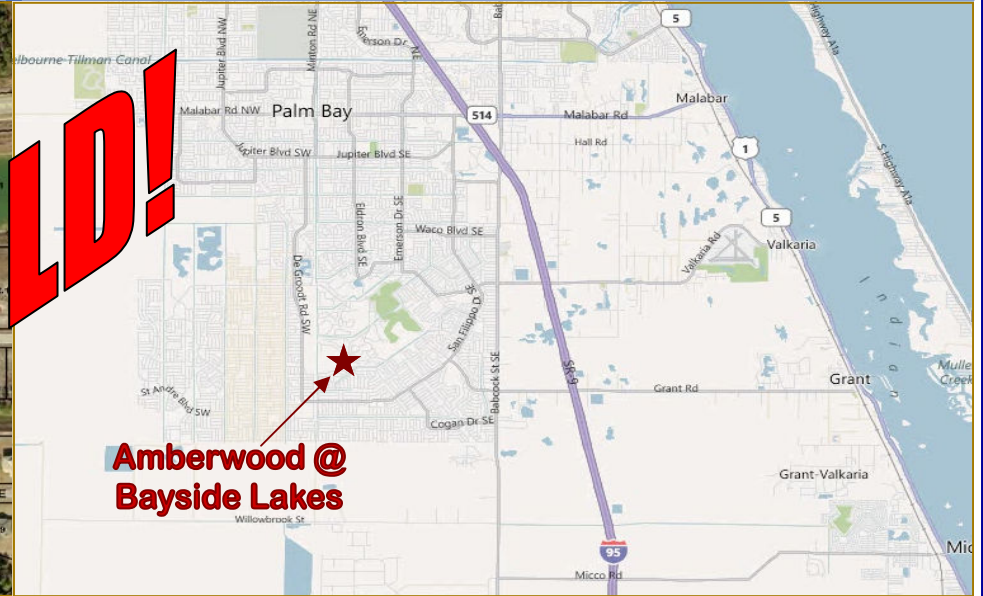
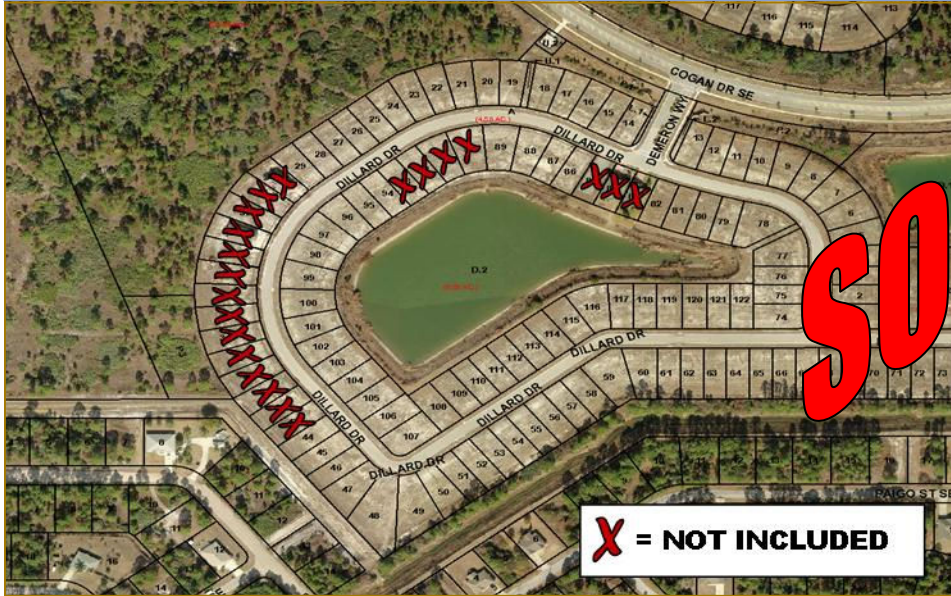


RESIDENTIAL LOTS FOR SALE

PALM BAY, BREVARD COUNTY, FL

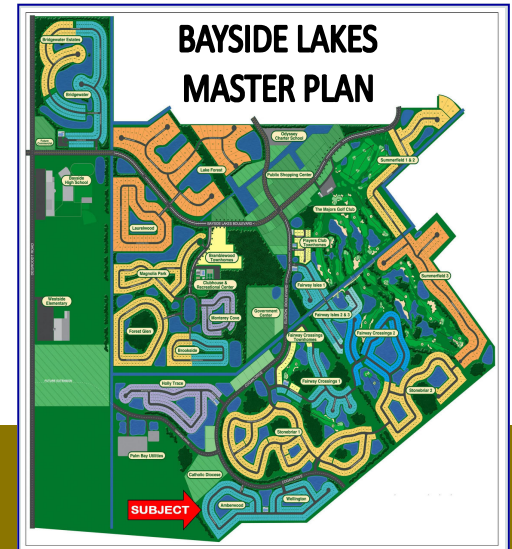
\$1,010,000



101 DEVELOPED RESIDENTIAL LOTS LOCATED WITHIN THE BAYSIDE LAKES DRI,
CITY OF PALM BAY, BREVARD COUNTY, FL

Features include:

- 101 Developed Lots within the 122-Lot "Amberwood" Subdivision
- Great visibility from Cogon Drive
- Typical lot size is 50' x 120'
- Located within the highly regarded Bayside Lakes DRI
- Zoning is PUD, Planned Unit Development
- Ready for vertical construction, subject to Utility Agreement reinstatement



For more information, please contact:

Leslie A. Maister, Broker
leslie@seas-llc.com
Direct: 561.988.5892

K. Reid Hotaling, Broker
reid@seas-llc.com
Direct: 561.988.5894

SOUTHEAST ASSET SPECIALISTS, LLC

951 Broken Sound Parkway, Suite 108, Boca Raton, FL 33487
Phone: 561.988.5890 • Fax: 561.241.5690 • www.seas-llc.com