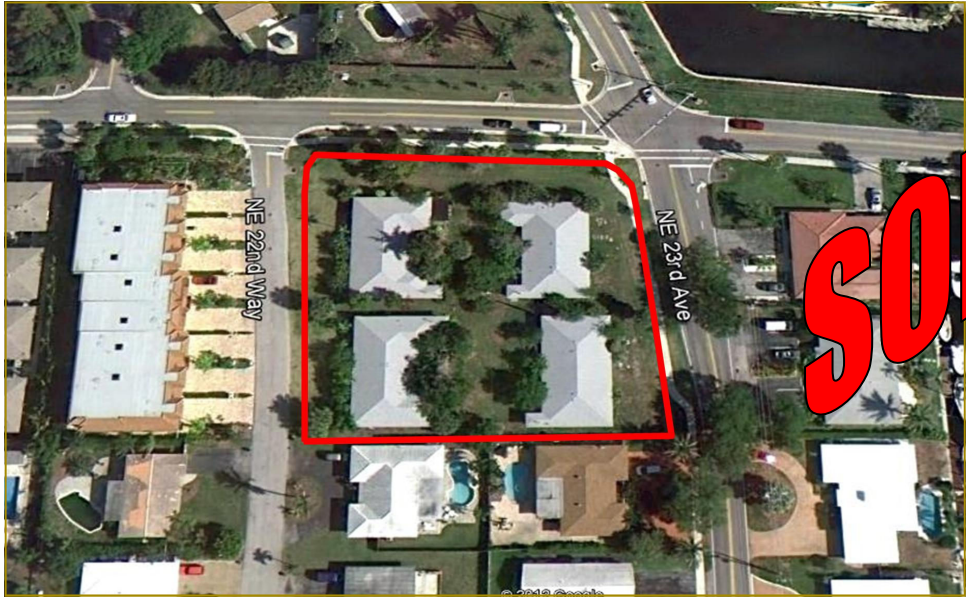


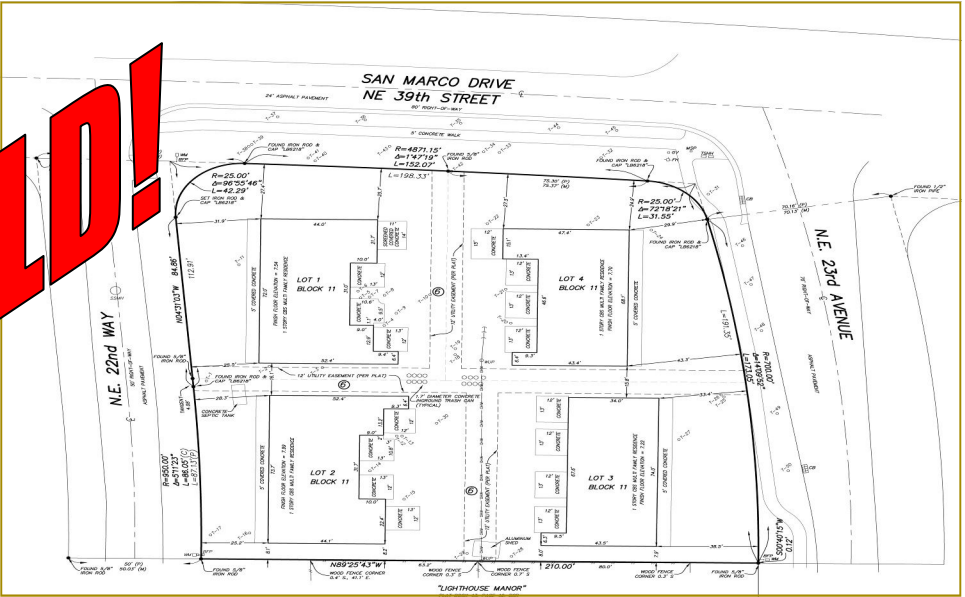
LIGHTHOUSE POINT INVESTMENT PROPERTY

\$1,100,000

3870 NE 22ND WAY & 3861 - 3871 NE 23RD AVE., LIGHTHOUSE POINT, BROWARD CO., FL



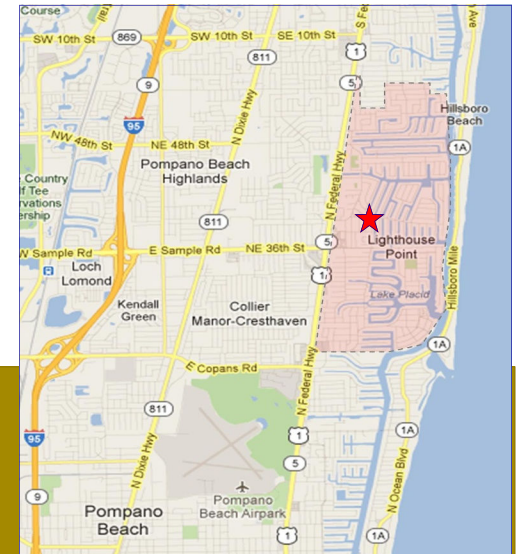
SOLD!



16 EXISTING RENTAL UNITS TO BE RENOVATED OR REDEVELOPED, LOCATED ON THE SOUTH SIDE OF NE 39TH STREET BETWEEN NE 22ND WAY & NE 23RD AVENUE, LIGHTHOUSE POINT, BROWARD COUNTY, FL

Other pertinent information:

- Bank-Owned
- Current zoning is RM-16
- Future Land Use is Medium Density
- 0.92+/- Acre site with existing, unoccupied rental units
- Desirable East Broward location in Lighthouse Point
- Great visibility on central Lighthouse Point intersection
- Existing unit mix consists of 14 - 1 Bedroom/1 Bath Units and 2 - 2 Bedroom/1 Bath Units



For more information, please contact:

Leslie A. Maister, Broker
leslie@seas-llc.com
Direct: 561.988.5892

K. Reid Hotaling, Broker
reid@seas-llc.com
Direct: 561.988.5894

SOUTHEAST ASSET SPECIALISTS, LLC

951 Broken Sound Parkway, Suite 108, Boca Raton, FL 33487

Phone: 561.988.5890 • Fax: 561.241.5690 • www.seas-llc.com