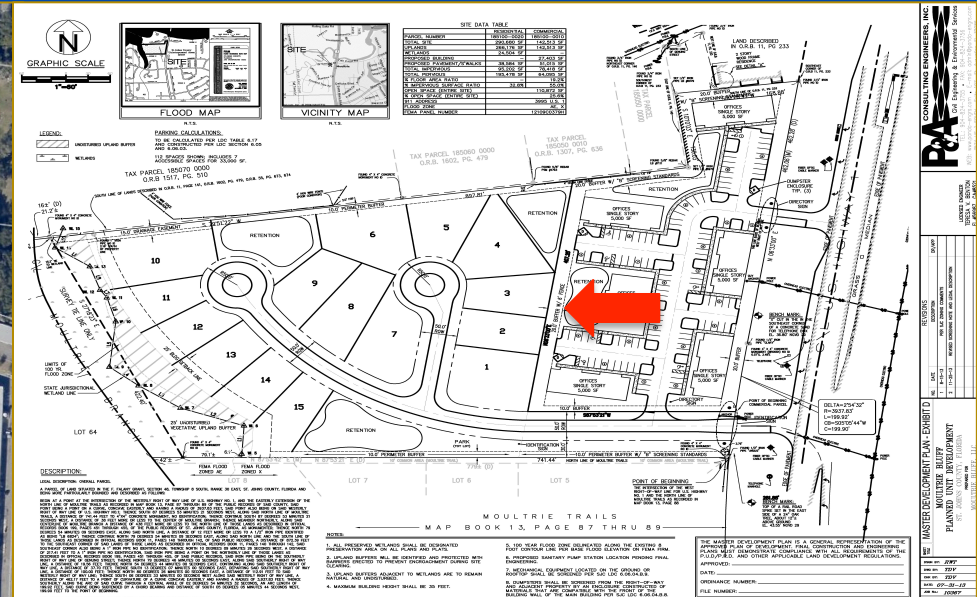
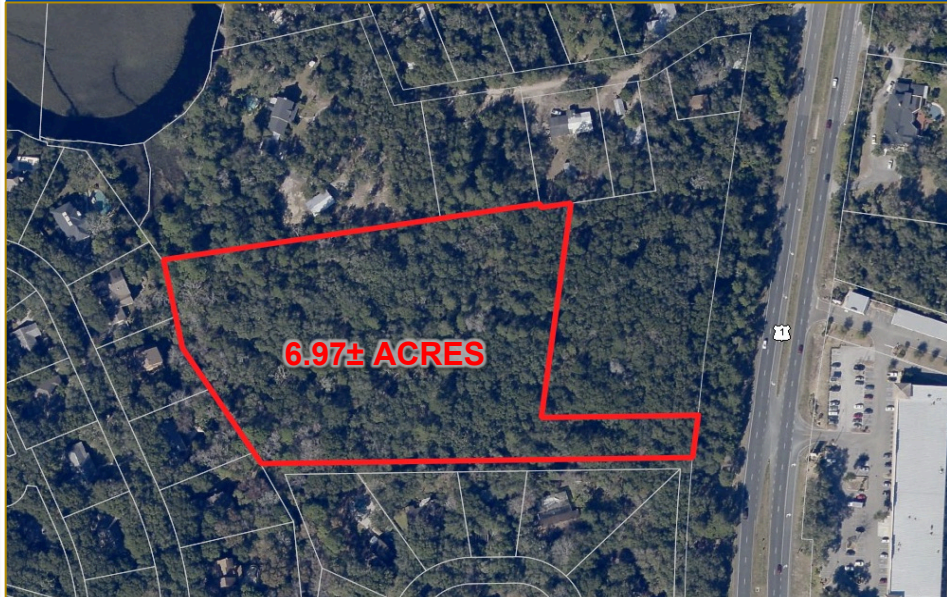


RESIDENTIAL LAND FOR SALE

XXX US-1, ST. AUGUSTINE AREA, ST. JOHNS CO., FL

\$475,000



6.97± ACRES VACANT RESIDENTIAL LAND LOCATED ON THE WEST SIDE OF US-1 JUST NORTH OF WILDWOOD DRIVE IN THE ST. AUGUSTINE AREA OF UNINCORPORATED ST. JOHNS COUNTY, FL

Other pertinent information:

- Suitable for development of up to 15 SFR Units
- Minimum lot size – 65’ x 105’
- Priced at only \$31,667/Unit
- Site is directly across US-1 from entrance to the Dollar General store located at 4010 US-1 S., St. Augustine, FL
- Currently zoned PUD, Planned Unit Development
- Future Land Use is Residential-C
- Commercial parcel fronting US-1 is approved for 25,000± sqft commercial/retail space.



For more information, please contact:

Karl Reid Hotaling
 reid@seas-llc.com
 Direct: 904.287.8476

SOUTHEAST ASSET SPECIALISTS, LLC
 Licensed Real Estate Broker
 10151 Deerwood Park Blvd., Bldg 200, Suite 250, Jacksonville, FL 32256
 Phone: 904.371.1291 • Mobile: 561.346.8858 • www.seas-llc.com

